

TOMA
youniform

INDICE INDEX

GIACCHE & CASACCHE 4/56
JACKETS & COAT

CAMICI 57
OVERALLS

PANTALONI CUCINA 58/76
KITCHEN PANTS

**GREMBIULI CUCINA
& RISTORAZIONE** 77/129
KITCHEN & SERVICE APRON

ACCESSORI 130/157
**RISTORAZIONE
& CUCINA**
SERVICE & KITCHEN
ACCESSORIES

PACKAGING 158
PRODOTTO/PRODUCT

TABELLA TAGLIE 159
SIZE CHART

NORME DI LAVAGGIO 160
WASHING/INSTRUCTIONS





WORK PASSION **MADE IN ITALY**

La **Toma Youniform** da oltre cinquant'anni è specializzata nella **produzione e distribuzione di abbigliamento per i professionisti della cucina e della ristorazione.**

Toma Youniform è il valore e la sicurezza di un marchio e un prodotto 100% MADE IN ITALY. Accurata selezione di materiali "intelligenti" della migliore qualità. L'affidabilità dei prodotti, concepiti per offrire il massimo comfort e la miglior resa e durata nel tempo.

Toma Youniform has been specializing for over fifty years in **the production and distribution of clothing for culinary and hospitality professionals.**

Toma Youniform represents the value and reliability of a brand and a product that is 100% MADE IN ITALY. A careful selection of high-quality "smart" materials. The reliability of products designed to offer maximum comfort, performance, and long-lasting durability.

GIACCHE CUCINA

KITCHEN JACKETS

Collezione <i>Collection</i>	Pagina <i>Page</i>
100 gr	6/15
Rian	16/17
Alan	18/19
Victor	20/21
Nora	22/23
Adler	24/25
Zugo	26/27
Fast	28/29
Omega	30/31
Everest	32/33
Giotto	34/35
King	36/37
Chef	38/39
Gordon	40/41
Dior	42/43
Frida	44/45
Mavi	46/47
Yuma	48/49
Atlas	50
Pacific	51
Zeus	52/53
Atlanta	54
Europa	55
Economic line	56
Evita & Itaco	57





60



Bianchi
White



Colorati
Colored



100 GRAMS UNISEX

Giacca unisex con taschino sulla manica sx; bottoni a pressione; rete di aereazione sulla parte posteriore.
Unisex jacket with left sleeve pockets; snap buttons; aeration net on rear.

Tessuto: cotone 100%

Fabric: cotton 100%

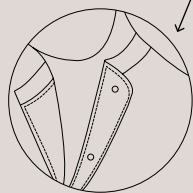
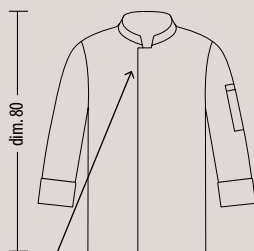
Taglie/Size: XS, S, M, L, XL, XXL, XXXL

Mod.1736_Bianco/White

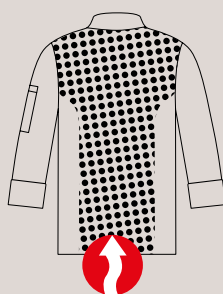
Mod.1737_Nero/Black

(gr. 100 mq)

Mod.1737



**BOTTONI NON
A CONTATTO
CON LA PELLE**
NO METAL
ON THE SKIN



TRASPIRANTE
BREATHABLE



Mod.1736



Bianchi
White



Colorati
Colored



100 GRAMS UNISEX

Giacca unisex con taschino sulla manica sx; bottoni a pressione; rete di aereazione sulla parte posteriore.
Unisex jacket with left sleeve pockets; snap buttons; aeration net on rear.

Tessuto: cotone 100%

Fabric: cotton 100%

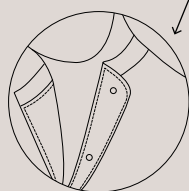
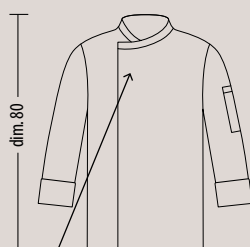
Taglie/Size: XS, S, M, L, XL, XXL, XXXL

Mod.1613 _Bianco/White

Mod.1614 _Nero/Black

(gr. 100 mq)

Mod.1614



**BOTTONI NON
A CONTATTO
CON LA PELLE**
NO METAL
ON THE SKIN



TRASPIRANTE
BREATHABLE



Mod.1613



Bianchi
White



Colorati
Colored



100 GRAMS UNISEX

Giacca unisex con taschino sulla manica sx; bottoni a pressione; rete di aereazione sulla parte posteriore.
Unisex jacket with left sleeve pockets; snap buttons; aeration net on rear.

Tessuto: cotone 100%

Fabric: cotton 100%

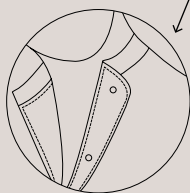
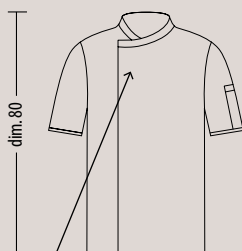
Taglie/Size: XS, S, M, L, XL, XXL, XXXL

Mod.1725 _Bianco/White

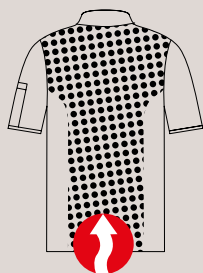
Mod.1726 _Nero/Black

(gr. 100 mq)

Mod.1725



**BOTTONI NON
A CONTATTO
CON LA PELLE**
NO METAL
ON THE SKIN



TRASPIRANTE
BREATHABLE



Mod.1726



100 GRAMS UNISEX

Giacca unisex con taschino sulla manica sx;
bottoni a pressione;
*Unisex jacket with left sleeve
pockets; snap buttons;*

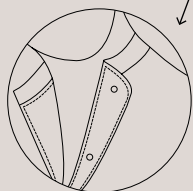
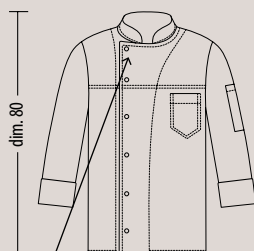
Tessuto: denim cotone 100%

Fabric: *denimcotton 100%*

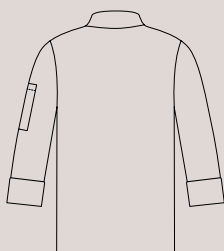
Taglie/Size: XS, S, M, L, XL, XXL, XXXL

Mod.1742_Blu/Blue

(gr. 100 mq)



**BOTTONI NON
A CONTATTO
CON LA PELLE**
NO METAL
ON THE SKIN







100 GRAMS DENIM UNISEX

Casacca unisex con tasche laterali (2) e taschino sul petto (1); rete di areazione sulla parte posteriore.

Unisex coat with side pockets (2) and breast pocket (1); aeration net on rear.

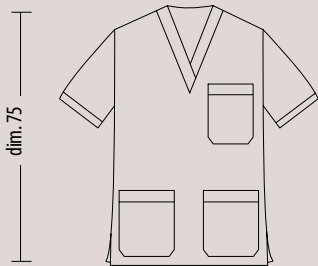
Tessuto: denim cotone 100%

Fabric: denim cotton 100%

Taglie/Size: XS, S, M, L, XL, XXL, XXXL

Mod.1812_Blu/Blue

(gr. 100 mq)



TRASPIRANTE
BREATHABLE







RIAN UNISEX

Giacca unisex con taschino sul petto e sulla manica sinistra; rete di areazione sulla parte posteriore; lampo apertura rapida.

Unisex jacket with breast and left sleeve pockets; aeration net on rear; easy opening zip.

Tessuto: microfibra 100%

Fabric: microfibre 100%

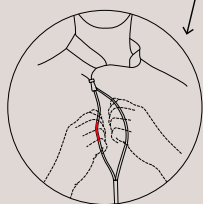
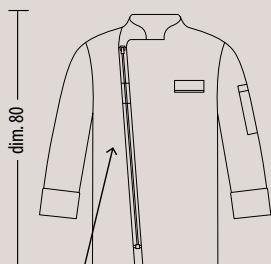
Taglie/Size: XS, S, M, L, XL, XXL, XXXL

Mod. 1632_Bianco/White

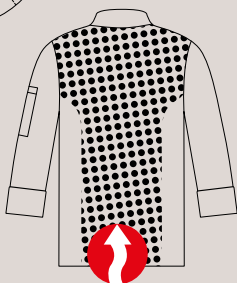
Mod. 1633_Nero/Black

(gr. 110 mq)

Mod. 1632



**APERTURA
RAPIDA**
EASY OPEN



TRASPIRANTE
BREATHABLE





Mod. 1633



ALAN UNISEX

Giacca unisex con taschino sul petto e sulla manica sinistra; rete di areazione sulla parte posteriore; bottoni a pressione.
Unisex jacket with breast and left sleeve pockets; aeration net on rear; snap buttons.

Tessuto: microfibra 100%

Fabric: microfibre 100%

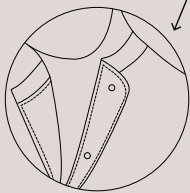
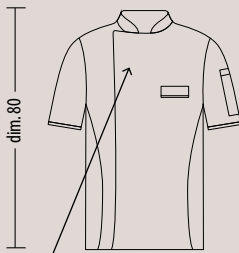
Taglie/Size: XS, S, M, L, XL, XXL, XXXL

Mod. 1634_Bianco/White

Mod. 1635_Nero/Black

(gr. 110 mq)

Mod. 1634



**BOTTONI NON
A CONTATTO
CON LA PELLE**
NO METAL
ON THE SKIN



TRASPIRANTE
BREATHABLE





Mod. 1635



VICTOR UNISEX

Giacca unisex con taschino sul petto e sulla manica sinistra; rete di areazione sulla parte posteriore; bottoni a pressione.

Unisex jacket with breast and left sleeve pockets; aeration net on rear; snap buttons.

Tessuto: microfibra 100%

Fabric: microfibre 100%

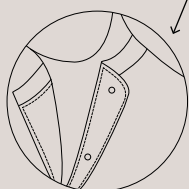
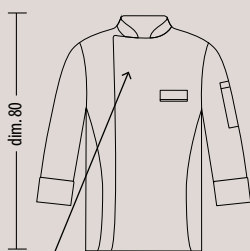
Taglie/Size: XS, S, M, L, XL, XXL, XXXL

Mod. 1630_Bianco/White

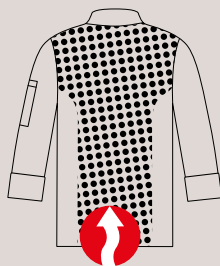
Mod. 1631_Nero/Black

(gr. 110 mq)

Mod. 1630



**BUTTONI NON
A CONTATTO
CON LA PELLE**
NO METAL
ON THE SKIN



TRASPIRANTE
BREATHABLE





Mod. 1631

50



NORA DONNA WOMAN

Giacca con taschino sulla manica sinistra;
rete di areazione sulla parte posteriore;
bottoni a pressione.

*Jacket with left sleeve pockets;
aeration net on rear; snap buttons.*

Tessuto: microfibra 100%

Fabric: microfibre 100%

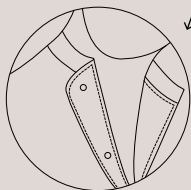
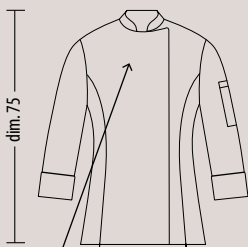
Taglie/Size: XS, S, M, L, XL, XXL

Mod. 1636_Bianco/White

Mod. 1637_Nero/Black

(gr. 110 mq)

Mod. 1637



**BOTTONI NON
A CONTATTO
CON LA PELLE**
NO METAL
ON THE SKIN



TRASPIRANTE
BREATHABLE





Mod. 1636



ADLER UNISEX

Casacca unisex con tasche laterali (2) e taschino sul petto (1); rete di areazione sulla parte posteriore.

Unisex coat with side pockets (2) and breast pocket (1); aeration net on rear.

Tessuto: microfibra 100%

Fabric: microfibre 100%

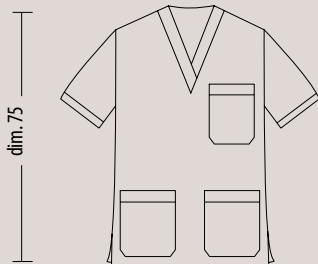
Taglie/Size: XS, S, M, L, XL, XXL, XXXL

Mod.1814 _Bianco/White

Mod.1813 _Nero/Black

(gr. 110 mq)

Mod. 1814



TRASPIRANTE
BREATHABLE





Mod. 1813

70



Bianchi
White



Colorati
Colored



ZUGO UNISEX

Giacca unisex con taschino sulla manica sx;
bottoni a pressione; rete di aereazione
sulla parte posteriore.

*Unisex jacket with left sleeve pockets;
snap buttons; aeration net on rear.*

Tessuto: poliestere 65%-cotone 35%

Fabric: polyester 65%-cotton 35%

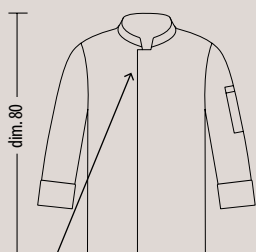
Taglie/Size: XS, S, M, L, XL, XXL, XXXL

Mod. 1738_Bianco/White

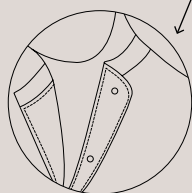
Mod. 1739_Nero/Black

(gr. 195 mq)

Mod. 1738



**BOTTONI NON
A CONTATTO
CON LA PELLE**
NO METAL
ON THE SKIN



TRASPIRANTE
BREATHABLE



Mod. 1739



Bianchi
White



Colorati
Colored



FAST UNISEX

Giacca unisex con taschino sul petto e sulla manica sinistra; lampo apertura rapida.
Unisex jacket with breast and left sleeve pockets; easy opening zip.

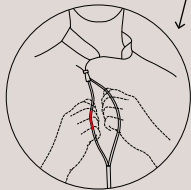
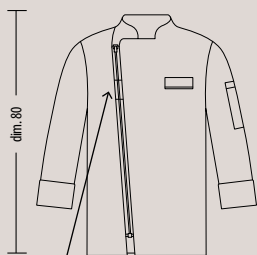
Tessuto: poliestere 65%-cotone 35%
Fabric: polyester 65%-cotton 35%
Taglie/Size: XS, S, M, L, XL, XXL, XXXL

Mod.1546_Bianco/White
Mod.1547_Nero/Black
Mod.1610_Grigio/Grey

(gr. 195 mq)

Mod.1547

**EASY
OPENING
UNISEX**





Mod.1546



Mod.1610



Bianchi
White



Colorati
Colored



OMEGA UNISEX

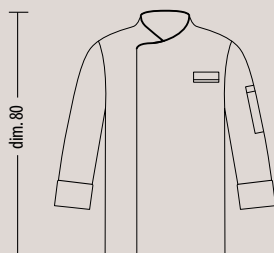
Giacca unisex con taschino sul petto e sulla manica sinistra; bottoni a pressione; rete di areazione ascellare.
Unisex jacket with breast and left sleeve pocket; snap buttons, underarm aeration net.

Tessuto: poliestere 65%-cotone 35%
Fabric: polyester 65%-cotton 35%
Taglie/Size: XS, S, M, L, XL, XXL, XXXL

Mod.1534 _Bianco/White
Mod.1535 _Nero/Black
Mod.1625 _Grigio/Grey

(gr. 195 mq)

Mod.1625





Mod.1535

Mod.1534



EVEREST UNISEX

Giacca unisex con taschino sul petto e sulla manica sinistra; bottoni a pressione.
Unisex jacket with breast and left sleeve pockets; snap buttons.

Tessuto: poliestere 65%-cotone 35%

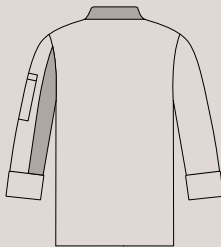
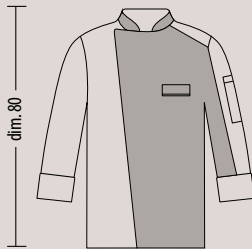
Fabric: polyester 65%-cotton 35%

Taglie/Size: XS, S, M, L, XL, XXL, XXXL

Mod. 1560_Grigio-Rosso/Grey-Red

Mod. 1559_Nero-Grigio/Black-Grey

(gr. 195 mq)



Mod. 1559



Mod. 1560



GIOTTO UNISEX

Giacca unisex con taschino sul petto e sulla manica sinistra, bottoni estraibili.
Unisex jacket with breast and left sleeve pocket, removable buttons.

Tessuto: poliestere 65%-cotone 35%

Fabric: polyester 65%-cotton 35%

Taglie/Size: XS, S, M, L, XL, XXL, XXXL

Mod.1533 Nero/Black

Mod.1532 Bianco/White

(gr. 210 mq)

Mod.1533



95°
WASHING





Mod.1532

95



KING UNISEX

Giacca unisex con taschino sul petto e sulla manica sinistra, bottoni a pressione.

Unisex jacket with breast and left sleeve pocket, snap buttons.

Tessuto: poliestere 65%-cotone 35%

Fabric: polyester 65%-cotton 35%

Taglie/Size: XS, S, M, L, XL, XXL, XXXL

Mod.1530_Bianco/White

Mod.1531_Nero/Black

(gr. 210 mq)

Mod.1531



95°
WASHING





Mod.1530



CHEF UNISEX

Giacca unisex con taschino sulla manica sinistra; bottoni estraibili.

Unisex jacket with left sleeve pocket; removable buttons.

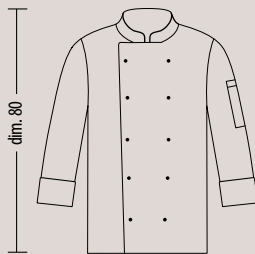
Tessuto: cotone 100%

Fabric: cotton 100%

Taglie/Size: XS, S, M, L, XL, XXL, XXXL

Mod. 283 Nero/Black

(gr. 195 mq)







GORDON UNISEX

Giacca unisex con taschino sul petto e sulla manica sinistra; rete di areazione sulla parte posteriore; bottoni a pressione.

Unisex jacket with breast and left sleeve pockets; aeration net on rear; snap buttons.

Tessuto: cotone 100%

Fabric: cotton 100%

Taglie/Size: XS, S, M, L, XL, XXL, XXXL

(gr. 200 mq)

Mod. 1644_ Supereroi/Superheroes

Mod. 1645_ Teschio/Skull

Mod. 1646_ Italia/Italy

Mod. 1645



TRASPIRANTE
BREATHABLE





Mod. 1646



Mod. 1644



Bianchi
White



Colorati
Colored



DIOR DONNA WOMAN

Giacca con taschino sulla manica sinistra; bottoni estraibili.
Jacket with left sleeve pockets; removable buttons.

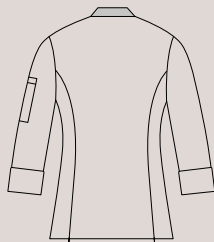
Tessuto: poliestere 65%-cotone 35%
Fabric: polyester 65%-cotton 35%
Taglie/Size: XS, S, M, L, XL, XXL

Mod.1561_Bianco/White

Mod.1562_Nero/Black

Mod.1627_Grigio/Grey

(gr. 195 mq)



Mod.1562



Mod.1627



Mod.1561





Bianchi
White



Colorati
Colored



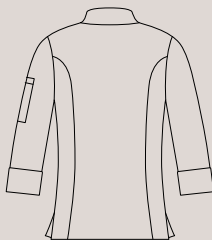
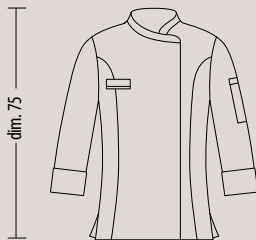
FRIDA DONNA WOMAN

Giacca con taschino sul petto e sulla manica sinistra; bottoni a pressione.
Jacket with breast and left sleeve pockets; snap buttons.

Tessuto: cotone 100%
Fabric: cotton 100%
Taglie/Size: XS, S, M, L, XL, XXL

Mod.1334 _Bianco/White
Mod.1335 _Nero/Black

(gr. 195 mq)



Mod.1334





Mod.1335



Bianchi
White



Colorati
Colored



MAVI UNISEX

Giacca unisex con taschino sulla manica sinistra;
rete di areazione sulla parte posteriore;
bottoni estraibili.

*Unisex jacket with left sleeve pocket; aeration
net on rear; removable buttons.*

Tessuto: cotone 100%

Fabric: cotton 100%

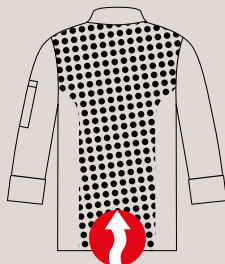
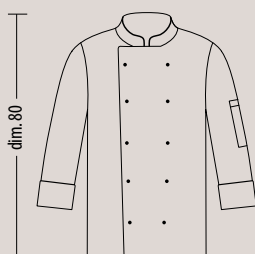
Taglie/Size: XS, S, M, L, XL, XXL, XXXL

Mod.1351_Nero/Black

Mod.1350_Bianco/White

(gr. 195 mq)

Mod.1350



**TRASPIRANTE
BREATHABLE**





Mod.1351



Bianchi
White



Colorati
Colored



YUMA UNISEX

Giacca unisex con taschino sul petto e sulla manica sinistra; rete di areazione sulla parte posteriore; bottoni a pressione.
Unisex jacket with breast and left sleeve pockets; aeration net on rear; snap buttons.

Tessuto: cotone 100%

Fabric: cotton 100%

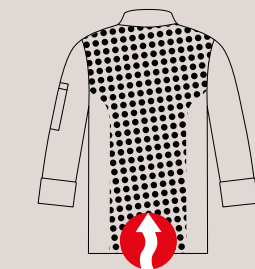
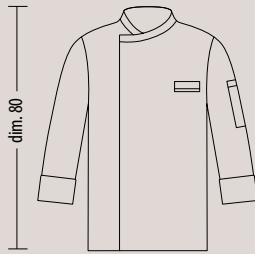
Taglie/Size: XS, S, M, L, XL, XXL, XXXL

Mod.1352_Bianco/White

Mod. 1353_Nero/Black

(gr. 195 mq)

Mod. 1353



TRASPIRANTE
BREATHABLE





Mod.1352



ATLAS UNISEX

Giacca unisex con taschino sulla manica sinistra;
bottoni estraibili.

*Unisex jacket with left sleeve pocket;
removable buttons.*

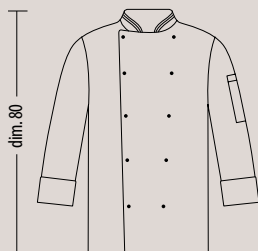
Tessuto: cotone 100%

Fabric: cotton 100%

Taglie/Size: XS, S, M, L, XL, XXL, XXXL

Mod. 1585_Bianco/White

(gr. 195 mq)





PACIFIC UNISEX

Giacca unisex con taschino sulla manica sinistra;
bottoni estraibili.

*Unisex jacket with left sleeve pocket;
removable buttons.*

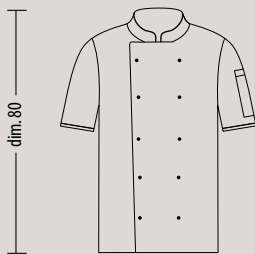
Tessuto: cotone 100%

Fabric: cotton 100%

Taglie/Size: XS, S, M, L, XL, XXL, XXXL

Mod. 185_Bianco/White

(gr. 195 mq)





Bianchi
White



Colorati
Colored



ZEUS UNISEX

Casacca unisex con tasche laterali (2) e taschino sul petto (1).
Unisex coat with side pockets (2) and breast pocket (1).

Tessuto: poliestere 65%-cotone 35%

Fabric: polyester 65% -cotton 35%

Taglie/Size: XS, S, M, L, XL, XXL, XXXL

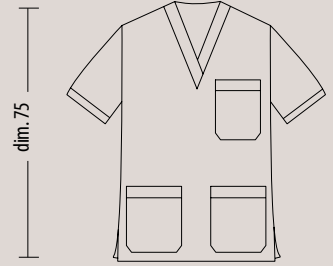
(gr. 195 mq)

Mod. 1570_Nero/Black

Mod. 1571_Rosso/Red

Mod. 1572_Giallo/Yellow

Mod. 1573_Bianco/White



Mod. 1570

Mod. 1573

Mod. 1572



Mod. 1571





ATLANTA UNISEX

Giacca unisex con taschino sulla manica sinistra; bottoni estraibili.
Unisex jacket with left sleeve pocket; removable buttons.

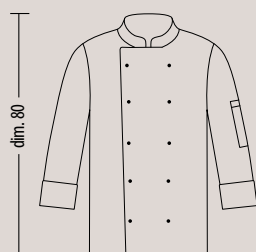
Tessuto: cotone 100%

Fabric: cotton 100%

Taglie/Size: XS, S, M, L, XL, XXL, XXXL

Mod. 179_Bianco/White

(gr. 195 mq)





EUROPA UNISEX

Giacca unisex con taschino sulla
manica sinistra; bottoni estraibili.
*Unisex jacket with left sleeve pocket;
removable buttons.*

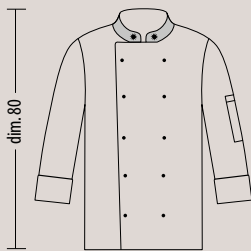
Tessuto: cotone 100%

Fabric: cotton 100%

Taglie/Size: XS, S, M, L, XL, XXL, XXXL

Mod. 182_Bianco/White

(gr. 195 mq)





Bianchi
White



Colorati
Colored



ECONOMIC LINE

UNISEX

Giacca unisex con taschino sulla manica sinistra; bottoni estraibili.
Unisex jacket with left sleeve pocket; removable buttons.

Tessuto: cotone 100%

Fabric: cotton 100%

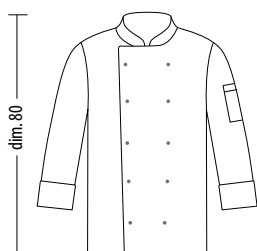
Taglie/Size: XS, S, M, L, XL, XXL

(gr. 200 mq)



Prodotto importato

Imported product



Mod. 1125
Bianco/White

Mod. 1615
Nero/Black



EVITA & ITACO

CAMICI/OVERALLS



Mod. 197

Mod. 196

Camice con tasche laterali (2) e taschino sul petto (1).
Overalls with side pockets (2) and breast pocket (1).

Tessuto: poliestere 65% -cotone 35%

Fabric: polyester 65% -cotton 35%

Tinta unita/One color: bianco/white

Taglie/Size: S, M, L, XL, XXL

Mod. 196_Evita Donna/Woman

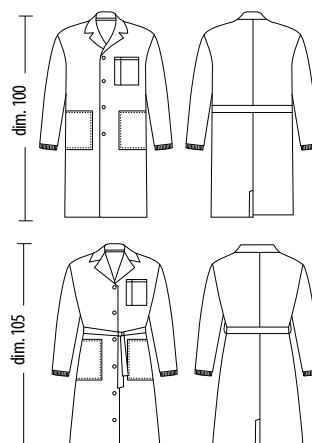
Cinta in vita ed elastico ai polsi.

Waist belt and elastic wrist.

Mod. 197_Itaco Uomo/Man

Elastico ai polsi/Elastic wrist.

(gr. 140 mq)





PANTALONI CUCINA

KITCHEN
PANTS





100 GRAMS UNISEX



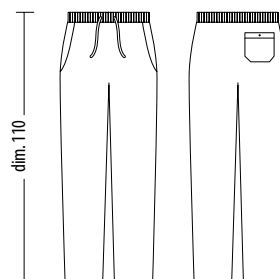
Pantalone unisex con elastico in vita;
tasche laterali (2) e posteriore (1).
*Unisex pants with elastic waist;
side pockets (2) and back (1).*

Tessuto: denim cotone 100%

Fabric: denim cotton 100%

Taglie/Size: XS, S, M, L, XL, XXL, XXXL

Mod. 1743 Blu/Blue





MILTON UNISEX



Pantalone unisex con elastico in vita;
tasche laterali (2) e posteriore (1).
Unisex pants, elastic waist; side pockets (2) and back (1).

Tessuto: cotone 100%

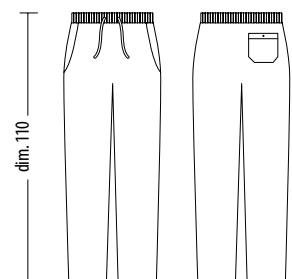
Fabric: cotton 100%

Taglie/Size: XS, S, M, L, XL, XXL, XXXL

Mod. 1642_Game Over

Mod. 1641_Supereroi/Superheroes

(gr. 200 mq)





MILTON

UNISEX



Mod. 1640

Mod. 1643



Pantalone unisex con elastico in vita; tasche laterali (2) e posteriore (1).
Unisex pants, elastic waist; side pockets (2) and back (1).

Tessuto: cotone 100%

Fabric: cotton 100%

Taglie/Size: XS, S, M, L, XL, XXL, XXXL

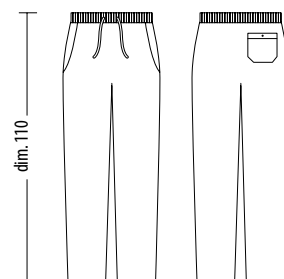
Mod. 1640_Cucina/Kitchen

Mod. 1643_Black & White

Mod. 1639_Italia/Italy

Mod. 1638_Teschio/Skull

(gr. 200 mq)





MILTON UNISEX

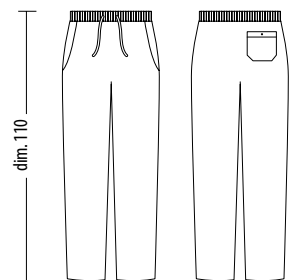


Pantalone unisex con elastico in vita;
tasche laterali (2) e posteriore (1).
Unisex pants, elastic waist; side pockets (2) and back (1).

Tessuto: cotone 100%
Fabric: cotton 100%
Taglie/Size: XS, S, M, L, XL, XXL, XXXL

Mod. 1457 Diavoletto/Devil
Mod. 1456 New York

(gr. 200 mq)





Mod. 187
Jeans



Mod. 1127
Città/City



Mod. 1129
Riga Bordeaux
Wine Red Stripe



Mod. 1133
Bordeaux Fantasia
Wine Red Patterned



Mod. 1126
Giornale
Newspaper

70

Bianchi
WhiteColorati
Colored

ROBIN UNISEX



Pantalone unisex con elastico in vita; tasche laterali (2) e posteriore (1).
Unisex pants, elastic waist; side pockets (2) and back (1).

Tessuto: poliestere 65%-cotone 35%

Fabric: polyester 65% -cotton 35%

Taglie/Size: XS, S, M, L, XL, XXL, XXXL

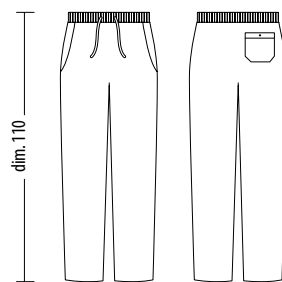
Mod. 1574_Nero/Black

Mod. 1575_Rosso/Red

Mod. 1576_Giallo/Yellow

Mod. 1577_Bianco/White

(gr. 195 mq)



Mod. 1577

Mod. 1576



ASTRO UNISEX



Pantalone unisex con elastico in vita;
tasche laterali (2) e posteriore (1).
Unisex pants, elastic waist; side pockets (2) and back (1).

Tessuto: poliestere 50%-cotone 50%

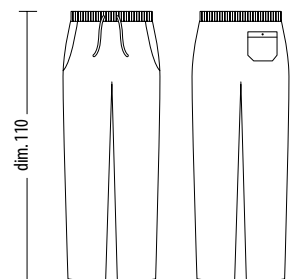
Fabric: polyester 50%-cotton 50%

Taglie/Size: XS, S, M, L, XL, XXL, XXXL

Mod. 1580_ Principe di Galles/*Prince of Wales Check*

Mod. 1581_Riga azzurra/*Sky Blue Pin Stripe*

(gr. 180 mq)





SIRIO UNISEX



Pantalone unisex con elastico in vita;
tasche laterali (2) e posteriore (1).
Unisex pants, elastic waist; side pockets (2) and back (1).

Tessuto: poliestere 65%-cotone 35%

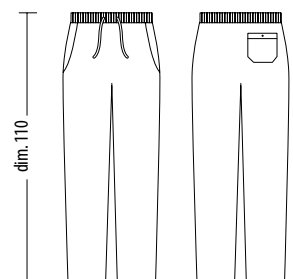
Fabric: polyester 65%-cotton 35%

Taglie/Size: XS, S, M, L, XL, XXL, XXXL

Mod. 1458_Nero Gessato/Black Pin Stripe

Mod. 1590_Blu Gessato/Blue Pin Stripe

(gr. 190 mq)





OTEGO UNISEX

Bianchi
White

Colorati
Colored



Mod. 1588

Mod. 195

Pantalone unisex con elastico in vita;
tasche laterali (2) e posteriore (1).
Unisex pants, elastic waist; side pockets (2) and back (1).

Tessuto: cotone 100%

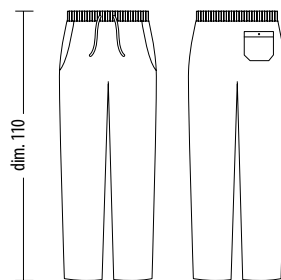
Fabric: cotton 100%

Taglie/Size: XS, S, M, L, XL, XXL, XXXL

Mod. 195 Bianco/White

Mod. 1588 Nero/Black

(gr. 200 mq)





ISCHIA UNISEX



Pantalone unisex con passanti in vita; tasche laterali (2) e posteriore (1); chiusura lampo con zip.
Unisex pants belt loops; side pockets (2) and back (1); zip closure.

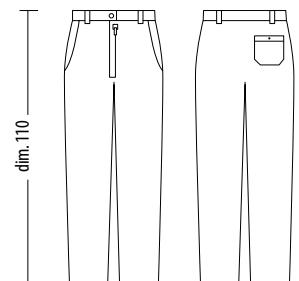
Tessuto: cotone 100%

Fabric: cotton 100%

Taglie/Size: XS, S, M, L, XL, XXL, XXXL

Mod. 189_Pied de Poule

(gr. 220 mq)





RENO UNISEX



Pantalone unisex con elastico in vita;
tasche laterali (2) e posteriore (1).
Unisex pants, elastic waist; side pockets (2) and back (1).

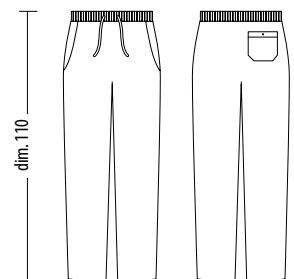
Tessuto: cotone 100%

Fabric: cotton 100%

Taglie/Size: XS, S, M, L, XL, XXL, XXXL

Mod. 287_Nero Quadri Bianchi/Black White Checks

(gr. 180 mq)





CAPRI UNISEX



Pantalone unisex con elastico in vita;
tasche laterali (2) e posteriore (1).
Unisex pants, elastic waist; side pockets (2) and back (1).

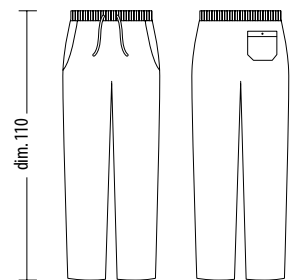
Tessuto: cotone 100%

Fabric: cotton 100%

Taglie/Size: XS, S, M, L, XL, XXL, XXXL

Mod. 188_Pied de Poule

(gr. 220 mq)





SCOTT UNISEX



Pantalone unisex con elastico in vita;
tasche laterali (2) e posteriore (1).
Unisex pants, elastic waist; side pockets (2) and back (1).

Tessuto: poliestere 65%-cotone 35%

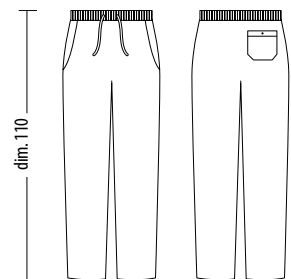
Fabric: polyester 65%-cotton 35%

Taglie/Size: XS, S, M, L, XL, XXL, XXXL

Mod. 1552: Poker

Mod. 1553: Mani/Hands

(gr. 210 mq)





SCOTT UNISEX

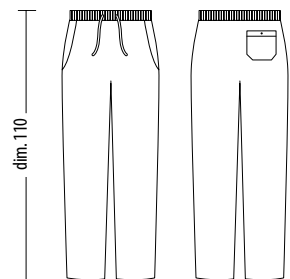


Pantalone unisex con elastico in vita;
tasche laterali (2) e posteriore (1).
Unisex pants, elastic waist; side pockets (2) and back (1).

Tessuto: poliestere 65%-cotone 35%
Fabric: polyester 65%-cotton 35%
Taglie/Size: XS, S, M, L, XL, XXL, XXXL

Mod. 1549_Food
Mod. 1551_Paprika

(gr. 210 mq)





Bianchi
White



Colorati
Colored



ECONOMIC LINE

UNISEX

Pantalone unisex con elastico in vita;
tasche laterali (2) e posteriore (1).
*Unisex pants, elastic waist;
side pockets (2) and back (1).*

Tessuto: cotone 100%

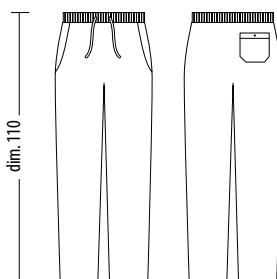
Fabric: cotton 100%

Taglie/Size: XS, S, M, L, XL, XXL

Mod.1805 (gr. 200 mq)
Nero/Black

Mod.1545 (gr. 200 mq)
Bianco/White

Mod. 1124 (gr. 220 mq)
Quadretto Bianco & Nero
Black & White checked



Prodotto importato
Imported product



Mod. 1124



Mod.1805

Mod.1545

GREMBIULI CUCINA & RISTORAZIONE

KITCHEN
& SERVICE
APRON





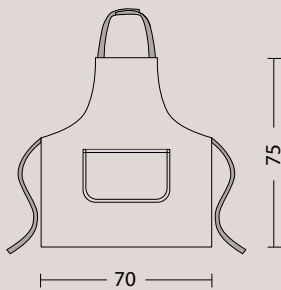
TOKYO UNISEX

Grebiule unisex; lacci e collo in denim;
collo regolabile con velcro.
*Unisex apron; denim laces &
collar velcro adjustable.*

Tessuto: Ecopelle 100%
Fabric: Eco-leather 100%;
Taglia Unica/One Size Only

Mod. 1806_Nero/Black

Mod. 1806





BERLINO UNISEX

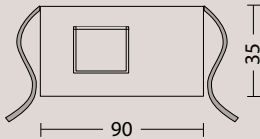
Grebiule unisex con lacci in denim.
Unisex apron whit denim laces.

Tessuto: Ecopelle 100%

Fabric: Eco-leather 100%;

Taglia unica/One Size Only

Mod. 1807_Nero/Black



Mod. 1807

Una **mini capsula** all'avanguardia innovativa e giovane, che guarda a locali di tendenza.

Grebiuli timeless senza data di scadenza e senza stagione;

versatili ed eleganti al tempo stesso da poter essere abbinati a diversi mood.

La collezione è studiata nel minimo dettaglio, assicurando comfort ed ottima vestibilità e lavaggio garantito a 40°.

*Innovative, avant-garde and young-**a mini-capsule** winking at trendy clubs.*

Timeless aprons with no expiry date or season;

versatile and elegant at the same time, they can be a match to any mood.

The whole collection is studied down to the smallest detail, ensuring comfort and excellent wearability- as well as guaranteed washing at 40°.



Un packaging sostenibile, innovativo e poliedrico.

A sustainable, innovative and versatile pack.



Ogni grembiule è avvolto nella carta velina e inserito all'interno di **un pack tubo** realizzato in cartone, soluzione che permette di diminuire nettamente l'impatto ambientale.

Solo il tappo è in plastica riciclabile, con stampato sopra il nome e il disegno del prodotto permettendoti di riconoscerlo a colpo d'occhio.

I pack tubo hanno un design innovativo che rispecchia lo stile del grembiule: **trendy, moderno e sostenibile.** Possono essere usati per allestire creativamente spazi del punto vendita, garantendo un effetto originale e di tendenza.

*Each apron is wrapped in tissue paper and placed inside a **cardboard tube**, allowing for a significant reduction in environmental impact.*

Only the cap is made of recyclable plastic, with the product name and design printed on it for identification at first glance.

*The unique design of the tube pack goes hand-in-hand with the style of the apron: **trendy, modern and sustainable.** An extra help in the set-up of creative retail spaces, to achieve a guaranteed captivating and trendy impact.*



Dim. L 41 x ø 8 cm



GONDAL UNISEX



Mod. 1800



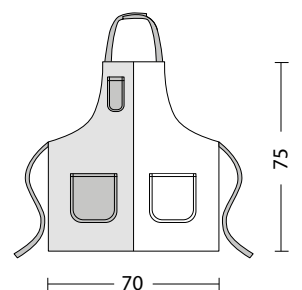
Mod. 1785

Grebiule unisex;
Collo regolabile con velcro;
tasche in ecopelle.
*Unisex apron;
Velcro adjustable collar;
pockets with eco-leather..*

Tessuto: denim cotone 100%
Fabric: denim cotton 100%
Taglia Unica/One Size Only

Mod. 1785
Marrone/Naturale
Brown/Natural

Mod. 1800
Nero/Naturale
Black/Natural





AVALON UNISEX



Mod. 1795



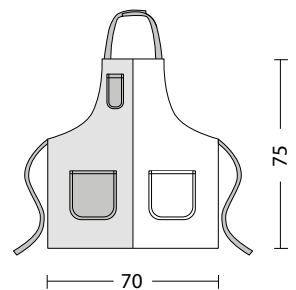
Mod. 1790

Grebiule unisex;
Collo regolabile con velcro.
*Unisex apron;
Velcro adjustable collar.*

Tessuto: denim cotone 100%
Fabric: denim cotton 100%
Taglia Unica/One Size Only

Mod. 1790
denim blu, tasche
in lino naturale
*Blue denim, pockets
with natural linen*

Mod. 1795
denim nero,
tasche in ecopelle
*Black denim,
pockets with
eco-leather*





KELOR UNISEX

Grebiule unisex, collo regolabile con laccio.
Unisex apron, adjustable collar with lace.

Tessuto: denim cotone 100%

Fabric: denim cotton 100%

Taglia Unica/One Size Only

Mod. 1745

Nero/Naturale
Black/Natural

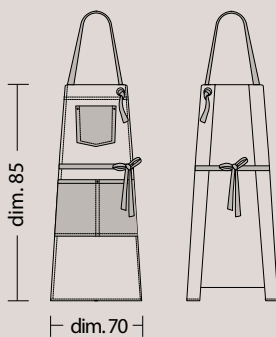
Mod. 1746

Blu/Naturale
Blue/Natural

Mod. 1747

Marrone/Naturale
Brown/Natural

Mod. 1747







FREDDIE UNISEX

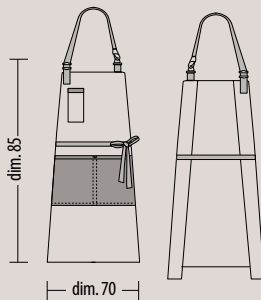
Grembiule unisex, collo regolabile.
Unisex apron, adjustable collar.

Tessuto: denim cotone 100%/ecopelle
Fabric: denim cotton 100%/eco-leather
Taglia Unica/One Size Only

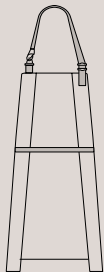
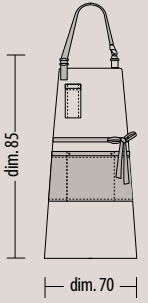
Mod. 1710
denim nero con tasca
in ecopelle nera.
*Black denim with black
eco-leather pocket.*

Mod. 1713
denim blu, tasca con profili
in ecopelle blu.
*Blue denim, pocket with
eco-leather blue profiles.*

(9 once/ounce)



Mod. 1710



Mod. 1713



BRIAN UNISEX



Mod. 1711



Mod. 1714

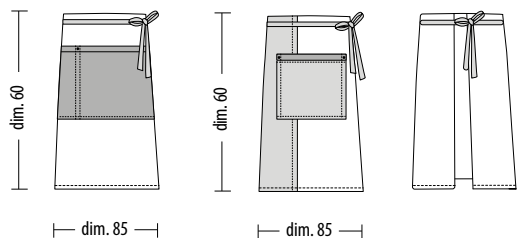
Grebiule unisex.
Unisex apron.

Tessuto: denim cotone 100%/ecopelle
Fabric: denim cotton 100%/eco-leather
Taglia Unica/One Size Only

Mod. 1711_ denim nero con tasca in ecopelle nera.
Black denim with black eco-leather pocket.

Mod. 1714_ denim blu, tasca con profili in ecopelle blu.
Blue denim, pocket with eco-leather blue profiles.

(9 once/ounce)





TORRES UNISEX



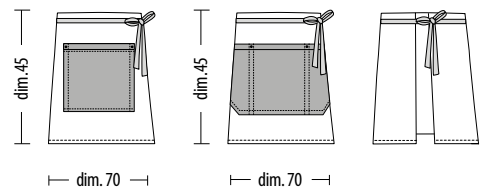
Grembiule unisex.
Unisex apron.

Tessuto: denim cotone 100%/ecopelle
Fabric: denim cotton 100%/eco-leather
Taglia Unica/One Size Only

Mod. 1712_ denim nero con tasca in ecopelle nera.
Black denim with black eco-leather pocket.

Mod. 1715_ denim blu, tasca con profili in ecopelle blu.
Blue denim, pocket with eco-leather blue profiles.

(9 once/ounce)





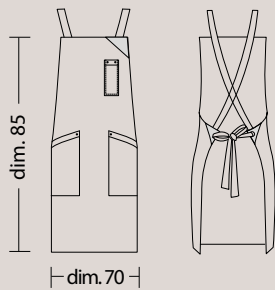
SHABBY UNISEX

Grebiule unisex,
allacciatura incrociata
nella parte posteriore.
*Unisex apron, cross-lacing
in the back.*

Tessuto: poliestere 80%-lino 20%;
Fabric: polyester 80%-linen 20%;
Taglia Unica/One Size Only

Mod. 1730
Naturale/Natural

Mod. 1731
Marrone/Brown



Mod. 1730

Mod. 1731





SHABBY UNISEX



Mod. 1735

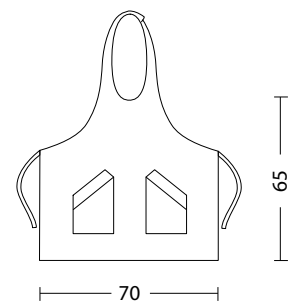


Mod. 1734

Grebiule unisex, collo regolabile con velcro.
Unisex apron with velcro adjustable collar.

Tessuto: poliestere 80%-lino 20%;
Fabric: polyester 80%-linen 20%;
Taglia Unica/One Size Only

Mod. 1734_Naturale/Natural
Mod. 1735_Marrone/Brown





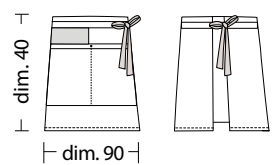
SHABBY UNISEX



Grebiule unisex, tasca in sughero.
Unisex apron, cork pockets.

Tessuto: poliestere 80%-lino 20%;
Fabric: polyester 80%-linen 20%;
Taglia Unica/One Size Only

Mod. 1732_Naturale/*Natural*
Mod. 1733_Marrone/*Brown*



50



BISTROT UNISEX

Grebiule unisex, collo regolabile con bottoni.
Unisex apron with button adjustable collar.

Tessuto: poliestere 100%

Fabric: polyester 100%

Tinta unita/One color_(gr. 195 mq)

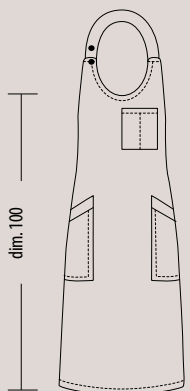
Mod. 1548_Nero/Black

Mod. 1620_Marrone/Brown

Gessato/Pin Stripe_(gr. 180 mq)

Mod. 275_Nero/Black

Mod. 1063_Bordeaux/Wine Red



dim. 85



Mod. 1063

Mod. 1620

Mod. 1548



Mod. 275



50



FABIAN UNISEX



Mod. 146

Mod. 144

Grebiule unisex, collo regolabile con velcro.
Unisex apron with velcro adjustable collar.

Tessuto: poliestere 100%
Fabric: polyester 100%
Taglia Unica/One Size Only

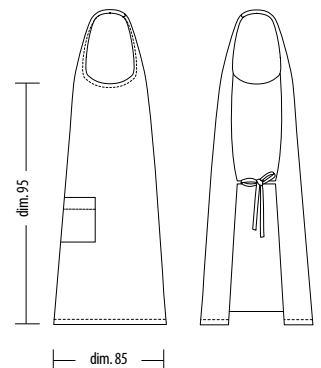
Gessato/*Pin Stripe* (gr. 180 mq)
Tinta unita/*One color* (gr. 195mq)

Mod. 144
Nero/*Black*

Mod. 146
Verdone/*Deep Green*

Mod. 1065
Nero Gessato/*Black Pin Stripe*

Mod. 1066
Bordeaux Gessato
Red Wine Pin Stripe





Mod. 1065

Mod. 1066



Mod. 142
Bordeaux
Wine Red



Mod. 143
Rosso/Red



Mod. 145
Bluette
Bright blue



Mod. 1398
Blu/Blue



Mod. 1399
Grigio/Grey



Mod. 1621
Marrone/Brown



CIPRO UNISEX



Mod. 1420



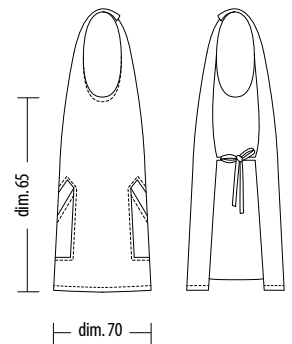
Mod. 259

Grebiule unisex, collo regolabile con velcro.
Unisex apron with velcro adjustable collar.

Tessuto: poliestere 100%
Fabric: polyester 100%
Taglia Unica/One Size Only

Fantasia/*Patterned* (gr. 160 mq)
Gessati/*Pin Stripe* (gr. 180 mq)
Tinta unita/*One color* (gr. 195 mq)

Mod. 259_Giallo/*Yellow*
Mod. 1420_Grigio/*Grey*





Mod. 260_
Turchese/Turquoise



Mod. 262
Arancio/Orange



Mod. 1083
Fucsia/Fuchsia



Mod. 1084
Bluette/Bright Blue



Mod. 1085
Nero/Black



Mod. 1087
Pistacchio/Pistachio



Mod. 1089
Verdone/Deep Green



Mod. 1090
Rosso/Red



Mod. 1091
Bordeaux/Wine Red



Mod. 1419
Blu/Blue



Mod. 1622
Marrone/Brown



Mod. 1086
Nero Gessato
Black Pin Stripe



Mod. 1088
Bordeaux Gessato
Wine Red Pin Stripe



Mod. 1417
Caffè/Coffee



Mod. 1418
Crêpes



NIZZA UNISEX



Mod. 1068
Bordeaux Gessato
Wine Red Pin
Stripe



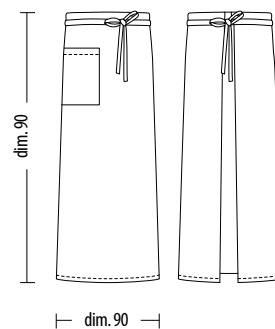
Mod. 1067
Nero Gessato
Black Pin Stripe

Grebiule unisex.
Unisex apron.

Tessuto: poliestere 100%
Fabric: polyester 100%
Taglia Unica/One Size Only

Tinta unita/One color (gr. 195 mq)
Gessati/Pin Stripe (gr. 180 mq)

Mod. 147_ Bordeaux/Wine Red
Mod. 148_ Nero/Black
Mod. 151_ Rosso/Red





MORGAN UNISEX



Grebiule unisex.
Unisex apron.

Tessuto: poliestere 65% - cotone 35%

Fabric: polyester 65%-cotton 35%

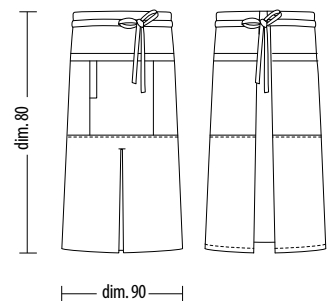
Taglia unica/One Size Only

Tinta unita/One color (gr. 210 mq)

Mod. 1582_Nero/Black

Mod. 1583_Grigio/Grey

Mod. 1584_Marrone/Brown





TIFFANY UNISEX



Mod. 1079



Mod. 1081



Mod. 1421

Grembiule unisex, collo regolabile con fibbia.
Unisex apron with buckle adjustable collar.

Tessuto/Fabric:

poliestere 65% -cotone 35%
polyester 65%-cotton 35%

Taglia Unica/One Size Only

Tinta unita/One color
(gr. 210 mq)

Mod. 1078
Verdone
Deep Green

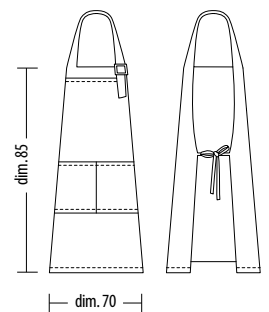
Mod. 1079
Bordeaux
Wine Red

Mod. 1081
Nero/Black

Mod. 1421
Marrone/Brown

Mod. 1422
Grigio/Grey

Mod. 1423
Blu/Blue



Mod. 1422



Mod. 1423



Mod. 1078





LIMA UNISEX



Mod. 1462



Mod. 1461

Mod. 1651

Grembiule unisex.
Unisex apron.

Tessuto: cotone 100%

Fabric: cotton 100%

Taglia Unica/One Size Only

Fantasia/*Patterned* (gr. 200 mq)

Gessati/*Pin Stripe* (gr. 190 mq)

Tinta unita/*One color* (gr. 260 mq)

Mod. 1651

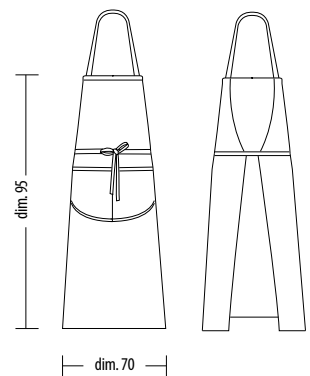
Game Over

Mod. 1461

Diavoletto/*Devil*

Mod. 1462

Nero/*Black*





Mod. 1463
Blu/Blue



Mod. 1463
Grigio/Grey



Mod. 1464
Verdone/Deep Green



Mod. 1459
New York



Mod. 1460
Nero Gessato
Black Pin Stripe



Mod. 1591
Blu Gessato
Blue Pin Stripe



Mod. 1592
Giornale/Newspaper



Mod. 1647
Teschio/Skull



Mod. 1649
Cucina/Kitchen



Mod. 1650
Supereroi
Superheroes



Mod. 1648
Italia/Italy



Mod. 1652
Black & White



VEGA UNISEX



Mod. 1594



Mod. 1470

Mod. 1467

Grembiule unisex.
Unisex apron.

Tessuto: cotone 100%

Fabric: cotton 100%

Taglia Unica/One Size Only

Fantasia/Patterned (gr. 200 mq)

Gessati/Pin Stripe (gr. 190 mq)

Tinta Unita/One color (gr. 260 mq)

Mod. 1467

Nero Gessato

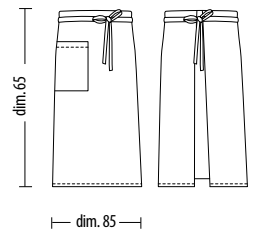
Black Pin Stripe

Mod. 1470

Nero /Black

Mod. 1594

Giornale/News paper





Mod. 1465
Diavoletto/*Devil*



Mod. 1466
New York



Mod. 1468
Blu/*Blue*



Mod. 1471
Grigio/*Grey*



Mod. 1472
Verdone/*Deep Green*



Mod. 1593
Blu Gessato
Blue Pin Stripe



Mod. 1653
Teschio/*Skull*



Mod. 1654
Italia/*Italy*



Mod. 1655
Cucina/*Kitchen*



Mod. 1656
Supereroi/*Superheroes*



Mod. 1657
Game over



Mod. 1658
Black & White



NEVADA UNISEX



Mod. 1660

Mod. 1661

Grembiule unisex.
Unisex apron.

Tessuto: cotone 100%

Fabric: cotton 100%

Taglia Unica/One Size Only

Fantasia/Patterned (gr. 200 mq)

Gessati/Pin Stripe (gr. 190 mq)

Tinta Unita/One color (gr. 260 mq)

Mod. 1659_Teschio/Skull

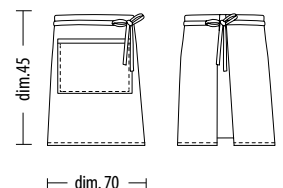
Mod. 1660_Italia/Italy

Mod. 1661_Cucina/Kitchen

Mod. 1662_Supereroi/Superheroes

Mod. 1667_New York

Mod. 1668_Nero / Black





Mod. 1662

Mod. 1659



Mod. 1663
Game over



Mod. 1664
Black & White



Mod. 1665
Giornale/Newspaper



Mod. 1666
Diavoletto/Devil



Mod. 1667

Mod. 1668



Mod. 1669
Nero Gessato
Black Pin Stripe



Mod. 1670
Blu Gessato
Blue Pin Stripe



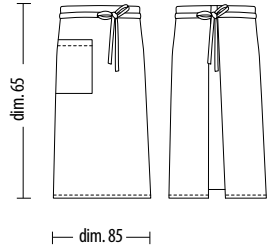
ARGO UNISEX

Grebiule unisex.
Unisex apron.

Tessuto: poliestere 100%
Fabric: polyester 100%
Taglia Unica/One Size Only

Mod. 265_Arancio/Orange
Mod. 1092_Fucsia/Fuchsia

Fantasia/Patterned (gr. 160 mq)
Gessati/Pin Stripe (gr. 180 mq)
Tinta unita/One color (gr. 195 mq)



Mod. 152
Nero/Black



Mod. 153
Rosso/Red



Mod. 155
Bluette
Bright Blue



Mod. 154
Bordeaux
Wine Red



Mod. 156
Verdone
Deep Green



Mod. 264
Giallo/Yellow



Mod. 266
Turchese/Turquoise



Mod. 1093
Pistachio/Pistachio



Mod. 1424
Grigio/Grey



Mod. 1425
Blu/Blue



Mod. 1094
Bordeaux Gessato
Wine Red Pin Stripe



Mod. 1095
Nero Gessato
Black Pin Stripe



Mod. 1624
Marrone/Brown



Mod. 1426
Crêpes



Mod. 1427
Caffè/Coffee



50



DAKOTA UNISEX

Grembiule unisex.
Unisex apron.

Tessuto: poliestere 100%

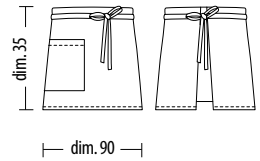
Fabric: polyester 100%

Taglia Unica/One Size Only

Fantasia/Patterned (gr. 160 mq)
Gessati/Pin Stripe (gr. 180 mq)
Tinta unita/One color (gr. 195 mq)

Mod. 159_Rosso/Red

Mod. 1098_Nero Gessato/Black Pin Stripe



Mod. 157

Bluette/Bright Blue



Mod. 158

Verdone/Deep Green



Mod. 160

Bordeaux/Wine Red



Mod. 161

Nero/Black



Mod. 268

Turchese/Turquoise



Mod. 269

Arancio/Orange



Mod. 271

Giallo/Yellow



Mod. 1097

Pistacchio/Pistachio



Mod. 1428

Grigio/Grey



Mod. 1429

Blu/Blue



Mod. 1432

Fucsia/Fuchsia



Mod. 1623

Marrone/Brown



Mod. 1430

Crêpes



Mod. 1431

Caffè/Coffee



Mod. 1096

Bordeaux Gessato
Wine Red Pin Stripe



Mod. 1098



Mod. 159



CARDIFF & DENVER

UNISEX



Mod. 1396



Mod. 1397

Grebiule unisex.
Unisex apron.

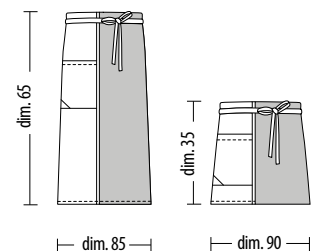
Doppio Colore: Grigio-Nero
Double color: Grey-Black

Tessuto: poliestere 100%
Fabric: polyester 100%
Taglia unica/One Size Only

(gr. 195 mq)

Mod. 1396
Cardiff

Mod. 1397
Denver





IMPERIAL UNISEX

Grebiule unisex, collo regolabile con velcro.
Unisex apron with velcro adjustable collar.

Doppio Colore: Grigio-Nero

Double color: Grey-Black

Tessuto: poliestere 100%

Fabric: polyester 100%

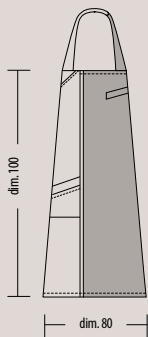
Taglia unica/One Size Only

(gr. 195 mq)

Mod. 1395

Grigio-Nero

Grey-Black



50



BRISTOL UNISEX



Mod. 1404



Mod. 1405

Grebiule unisex, collo regolabile con velcro.
Unisex apron with velcro adjustable collar.

Tessuto: poliestere 100%

Fabric: polyester 100%

Taglia Unica/One Size Only

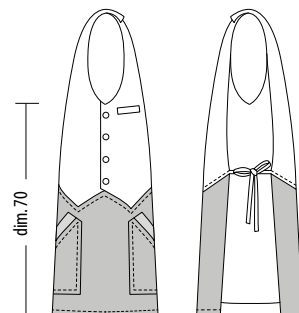
Doppio colore/Double color (gr. 195 mq)

Mod. 1402_Grigio-Nero/Grey-Black

Mod. 1403_Argento Gessato-Grigio/Silver Pin Stripe-Grey

Mod. 1404_Crêpes-Marrone/Crêpes-Brown

Mod. 1405_Caffè-Marrone/Coffee-Brown



— dim. 70 —



MADEIRA UNISEX



Mod. 1437



Mod. 1438

Grembiule unisex, collo regolabile con velcro.
Unisex apron with velcro adjustable collar.

Tessuto: poliestere 100%

Fabric: polyester 100%

Taglia Unica/One Size Only

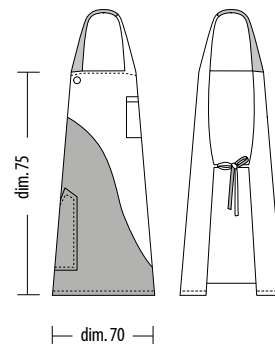
Doppio colore/Double color (gr. 195 mq)

Mod. 1435 _Nero Gessato-Rosso/Black Pin Stripe-Red

Mod. 1436 _Viola-Giallo/Violet-Yellow

Mod. 1437 _Blu-Arancio/Blue-Orange

Mod. 1438 _Fucsia-Pistacchio/Fuchsia-Pistachio





SIMON UNISEX



Mod. 256

Mod. 250

Grembiule unisex, collo regolabile con velcro.
Unisex apron with velcro adjustable collar.

Tessuto: poliestere 100%
Fabric: polyester 100%
Taglia unica
One Size Only

(gr. 195 mq)

Mod. 250_Riga Grigio Perla-Nero
Pearl Grey Stripe-Black

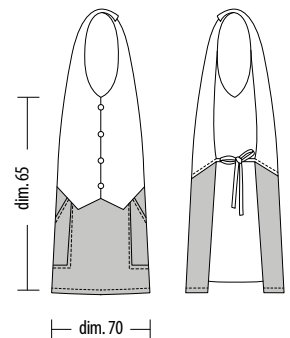
Mod. 252_Giallo Scozzese-Nero
Yellow Tartan-Black

Mod. 254_Principe di Galles-Nero
Prince of Wales Check-Black

Mod. 255_Riga Gialla-Nero
Yellow Stripe-Black

Mod. 256_Nero Gessato-Nero
Black Pin Stripe-Black

Mod. 1077_Scozzese-Turchese
Tartan-Turquoise





Mod. 255

Mod. 252



Mod. 1069
Scozzese-Pistachio
Tartan-Pistachio



Mod. 1075
Scozzese-Verdone
Tartan-Deep Green



Mod. 1071
Riga-Arancio
Stripe-Orange



Mod. 1076
Riga-Giallo
Stripe-Yellow



Mod. 1077

Mod. 254



Mod. 1073
Giornale-Nero
Newspaper
Pattern-Black



Mod. 1416
Bordeaux Gessato-
Bordeaux
Wine Red Pin
Stripe-Wine Red



PANAREA UNISEX



Mod. 1112

Mod. 1115



Mod. 1113



Mod. 1114



Mod. 1439



Mod. 1441

Grembiule unisex, collo regolabile con velcro.
Unisex apron with velcro adjustable collar.

Tessuto: poliestere 100%

Fabric: polyester 100%

Taglia Unica/One Size Only

Doppio colore/Double color (gr. 195 mq)

Mod. 1112_Nero-Riga Grigio Perla/Black-Pearl Grey Stripe

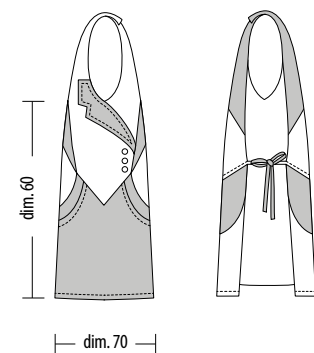
Mod. 1113_Rosso-Principe Di Galles/Red-Prince of Wales Check

Mod. 1114_Giallo-Scozzese/Yellow-Tartan

Mod. 1115_Bordeaux-Riga Spago/Wine Red-Cord Stripe

Mod. 1439_Rosso-Nero Gessato/Red-Black Pin Stripe

Mod. 1441_Fucsia-Blu/Fuchsia-Blue



50



MALTA UNISEX

Grebiule unisex, collo regolabile con velcro.
Unisex apron with velcro adjustable collar.

Tessuto: poliestere 100%

Fabric: polyester 100%

Taglia Unica/One Size Only

Doppio colore/Double color
(gr. 195 mq)

Mod. 1108

Arancio-Senape Gessato
Orange-Mustard Pin Strip

Mod. 1109

Pistacchio-Scozzese
Pistachio-Tartan

Mod. 1110

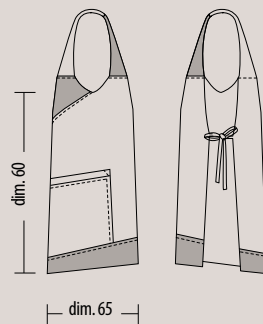
Bordeaux-Scozzese
Wine Red-Tartan

Mod. 1433

Blu-Arancio
Blue-Orange

Mod. 1434

Grigio-Riga Viola
Grey-Violet Stripe



Mod. 1434



Mod. 1108



Mod. 1109



Mod. 1110



Mod. 1433

50



OSLO UNISEX



Mod. 1408



Mod. 1406



Mod. 1410

Crembiule unisex, collo regolabile con velcro.
Unisex apron with velcro adjustable collar.

Tessuto: poliestere 100%
Fabric: polyester 100%
Taglia Unica/One Size Only

Doppio colore/Double color
(gr. 195 mq)

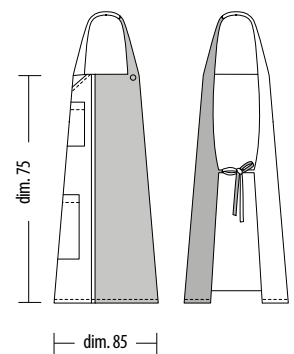
Mod. 1406
Bordeaux-Grigio
Wine Red-Grey

Mod. 1408
Viola-Blu
Violet-Blue

Mod. 1410
Arancio-Marrone
Orange-Brown

Mod. 1412
Marrone-Caffè
Brown-Coffee

Mod. 1414
Marrone-Crêpes
Brown-Crêpes



Mod. 1414



Mod. 1412





ROGER UNISEX



Mod. 1411



Mod. 1413



Mod. 1415

Grembiule unisex.
Unisex apron.

Tessuto: poliestere 100%
Fabric: polyester 100%
Taglia Unica/One Size Only

Doppio colore
Double color (gr. 195 mq)

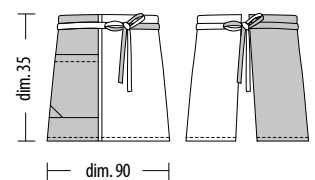
Mod. 1407
Bordeaux-Grigio
Wine Red-Grey

Mod. 1409
Viola-Blu
Violet-Blue

Mod. 1411
Arancio-Marrone
Orange-Brown

Mod. 1413
Marrone-Caffè
Brown-Coffee

Mod. 1415
Marrone-Crêpes
Brown-Crêpes



Mod. 1409



Mod. 1407





TELMA DONNA WOMAN

Grebiule, regolabile con laccetti.
Apron, adjustable with strings.

Tessuto: poliestere 100%

Fabric: polyester 100%

Taglia/Size: S,M,L

Doppio colore/*Double color*
(gr. 195 mq)

Mod. 1443

Nero Gessato-Rosso (retro)
Black Pin Stripe-Red (back)

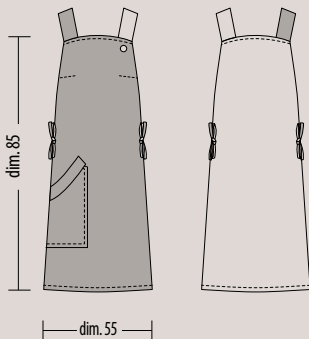
Mod. 1442

Viola-Giallo (retro)
Violet-Yellow (back)

Mod. 1444

Fucsia-Blu (retro)
Fuchsia-Blue (back)

Mod. 1443





Mod. 1442



Mod. 1444



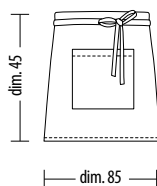
BARTON/DAYTON TORONTO UNISEX



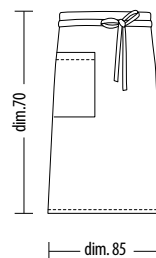
Grebiule unisex.
Unisex apron.

Tessuto: cotone 100%
Fabric: cotton 100%
Taglia Unica/One Size Only

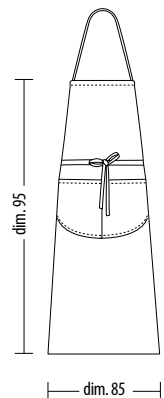
Tinta Unita/One color
(gr. 200 mq)



Barton _Mod. 198



Toronto _Mod. 199



Dayton _Mod. 200

50



PVC UNISEX

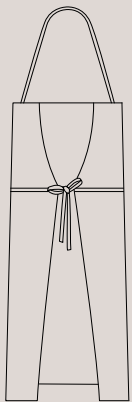
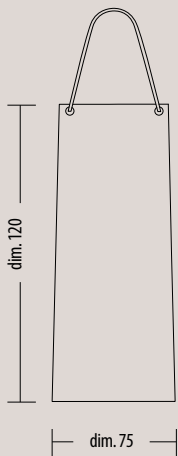
Grebiule unisex.
Unisex apron.

Tessuto: poliestere-pvc

Fabric: polyester-pvc

Taglia Unica/One Size Only

Mod. 222_Bianco/White





ACCESSORI RISTORAZIONE & CUCINA

SERVICE
& KITCHEN
ACCESSORIES





CAREN

DONNA/WOMAN



Mod. 1029



Mod. 1378

Gilet donna/Woman vest

Tessuto: poliestere 100%

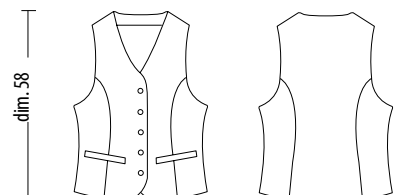
Fabric: polyester 100%

Taglie/Size: XS, S, M, L, XL

Tinta unita/One color
(gr. 195 mq)

Mod. 1029
Panna/Cream

Mod. 1378
Nero/Black



IRIS GRACE GOLDA DONNA WOMAN



IRIS

Camicia donna elasticizzata manica lunga.
Stretch long sleeved women's shirt.

Tessuto: cotone 97%-spandex 3%
Fabric: cotton 97%-spandex 3%
Taglie/Size: XS, S, M, L, XL, XXL

Mod. 1372_Bianco/White
Mod. 1376_Nero/Black

Mod. 1372 **Mod. 1376**



GRACE

Camicia donna manica lunga.
Long sleeved women's shirt.

Tessuto: poliestere 65%-cotone 35%
Fabric: polyester 65%-cotton 35%
Taglie/Size: S, M, L, XL

Mod. 1022_Bianco/White
Mod. 1024_Nero/Black

Mod. 1022 **Mod. 1024**



GOLDA

Polo donna manica corta.
Short sleeve women's polo.

Tessuto: cotone 100%
Fabric: cotton 100%
Taglie/Size: S, M, L, XL, XXL
Tinta unita/One color (gr. 200 mq)

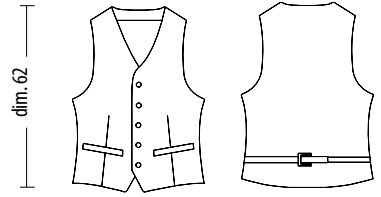
Mod. 1146_Bianco/White
Mod. 1151_Nero/Black

Mod. 1146 **Mod. 1151**





MARVIN UNISEX



Mod. 134



Mod.130



Mod.1032

Gilet Unisex.
Unisex Vest.

Tessuto: poliestere 100%
Fabric: polyester 100%
Taglie/Size: XS, S, M, L, XL, XXL

Tinta unita/One color (gr. 195 mq)
Gessati/Pin Stripe (gr. 180 mq)

Mod. 130_Bordeaux/Wine Red
Mod.134_Nero Gessato/Black Pin Stripe
Mod.1032_Bordeaux Gessato/Wine Red Pin Stripe



Mod. 128
Nero/Black



Mod. 129
Rosso/Red

ACCESSORI ACCESSORIES UNISEX



Vidal

T-shirt unisex manica corta
Unisex t-shirt short sleeve

Tessuto: cotone 100%

Fabric: cotton 100%

Taglie/Size: S, M, L, XL, XXL

Tinta unita/One color (gr. 150 mq)

Mod. 1174_Bianco/White

Mod. 1174



Berg

Guanti unisex in cotone 100%
Unisex gloves cotton 100%

Taglia Unica
One Size Only

Mod. 221

Bianco/White

Mod. 221



Lord

Papillon unisex/Unisex bow-tie

Tessuto: poliestere 100%

Fabric: polyester 100%

Taglia Unica
One Size Only



Mod. 1286

Bordeaux/Wine-Red



Mod. 1288

Nero/Black



Mod. 1287

Rosso/Red

BORIS ERIC DUVAL

UOMO/MAN



Boris

Camicia uomo manica lunga.
Long sleeved men's shirt.

Tessuto: poliestere 65%-cotone 35%

Fabric: polyester 65%-cotton 35%

Taglie/Size: 37,38,39,40,41,42,43,44,45,46,47,48

Mod. 122_Bianco/White

Mod. 1018_Nero/Black



Eric

Cravatta uomo
Men's tie.

Tessuto: poliestere 100%

Fabric: polyester 100%

Taglia Unica/One Size Only

Mod. 1720

Nero/Black

Mod. 1720



Duval

Cravatta uomo/*Men's tie.*

Tessuto: poliestere 100%

Fabric: polyester 100%

Taglia Unica/One Size Only

Mod. 1278

Nero/Black

Mod. 1278



MORRIS DANIEL

UOMO/MAN



Morris

Polo uomo manica corta.
Short sleeve men's polo.

Tessuto: cotone 100%

Fabric: cotton 100%

Taglie/Size: S, M, L, XL, XXL

Tinta unita/One color (gr. 200 mq)

Mod. 1139_Bianco/White

Mod. 1144_Nero/Black



Daniel

Pantalone uomo classico,
foderato davanti fino al ginocchio con passanti
e chiusura lampo. 2 tasche laterali e 1 tasca dietro.

Classic men's trousers, in front lined up to the knee.

Whit belt loops and zip fastener.

Side pochets (2) back pocket (1).

Tessuto: poliestere 100%

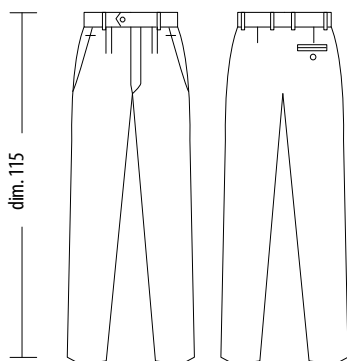
Fabric: polyester 100%

Taglie/Size: 48,50,52,54,56,58,60

Tinta unita/One color (gr. 170 mq)

Mod. 1009_Nero/Black

Mod. 1009



Mod. 1816





ZENO UNISEX



* **Mod. 1820**



Mod. 1818

Coppola unisex/Unisex cap

Tessuto: poliestere 65% -cotone 35%

Fabric: polyester 65%-cotton 35%

Taglia Unica/One Size Only

Mod. 1816_Nero/Black

Mod. 1818_Nero Gessato/Black Pin Stripe

* **Mod. 1820_Black & White**

* **Cotone 100%/Cotton 100%**
 Fantasia/Patterned (gr. 200 mq)
 Gessato/Pin Stripe (gr. 190 mq)
 Tinta unita/One color (gr. 190 mq)



Mod. 1815
Bianco/White



Mod. 1817
Grigio/Grey



Mod. 1819
Blu/Blue



* **Mod. 1821**
Supereroi
Superheroes



* **Mod. 1822**
Giornale
Newspaper



Bianchi
White



Colorati
Colored



PALMAS UNISEX

Cappello unisex regolabile con velcro.
Unisex hat adjustable with velcro.

Tessuto: cotone 100%

Fabric: Cotton 100%

Taglia Unica/One Size Only

Fantasia/Patterned (gr. 200 mq)

Gessato/Pin Stripe (gr. 190 mq)

Tinta unita/One color (gr. 190 mq)



Mod.212
Bianco/White



Mod. 1513
Nero/Black



Mod. 1244
Giornale/Newspaper



Mod. 1510
Diavoletto/Devil



Mod. 1511
New York



Mod. 1671
Teschio/Skull



Mod. 1672
Italia/Italy



Mod. 1673
Cucina/Kitchen



Mod. 1674
Supereroi
Superheroes



Mod. 1675
Game Over



Mod. 1676
Black & White



Mod. 1245
Città/City



Mod. 1246
Riga Bordeaux
Wine Red Stripe



Mod. 1248
Bordeaux Fantasia
Wine Red Patterned



Mod. 289
Nero Quadri Bianchi
Black White Checks



Mod. 1512
Nero Gessato
Black Pin Stripe



Mod. 1596
Blu Gessato
Blue Pin Stripe



LIAM UNISEX

Berretto con elastico posteriore.
Beret with back elastic.

Tessuto: cotone 100%

Fabric: Cotton 100%

Taglia Unica/One Size Only

Fantasia/*Patterned* (gr. 200 mq)

Gessato/*Pin Stripe* (gr. 190 mq)

Tinta unita/*One color* (gr. 190 mq)

* Denim cotone 100%/Denim cotton 100% (9 once-ounce)



Mod. 1695
Teschio/Skull



Mod. 1696
Italia/Italy



Mod. 1697
Cucina/Kitchen



Mod. 1698
Supereroi/Superheroes



Mod. 1699
Game over



Mod. 1700
Black & White



Mod. 1703
Giornale/Newspaper



Mod. 1704
Diavoletto/Devil



Mod. 1701
Nero Gessato
Black Pin Stripe



Mod. 1702
Nero/Black



* **Mod. 1716**
Blu/Blue



* **Mod. 1717**
Nero/Black



* **Mod. 1748**
Marrone/Brown

60



Bianchi
White



Colorati
Colored



TOLEDO UNISEX

Bandana unisex.
Unisex bandana.

Tessuto: cotone 100%

Fabric: Cotton 100%

Taglia Unica/One Size Only

Tinta unita/One color (gr. 190 mq)

Gessato/Pin Stripe (gr. 190 mq)

Fantasia/Patterned (gr. 200 mq)

Mod. 1504_Nero Gessato/Black Pin stripe

Mod. 1679_Cucina/Kitchen

Mod. 1680_Supereroi/Superheroes

Mod. 1680



Mod. 295
Bianco/White



Mod. 1505
Nero/Black



Mod. 292
Nero Quadri Bianchi
Black White Checks



Mod. 293
Pied de Poule



Mod. 294
Jeans



Mod. 1211
Città/City



Mod. 1221
Giornale/Newspaper



Mod. 1502
Diavoletto/Devil



ASPEN UNISEX



Bandana unisex.
Unisex bandana.

Tessuto: poliestere 100%
Fabric: polyester 100%
Taglia Unica/One Size Only

Tinta unita/One color (gr. 195 mq)
Fantasia/Patterned (gr. 160 mq)
Gessati/Pin Stripe (gr. 180 mq)

Mod. 1217_Rosso/Red
Mod. 1220_Nero/Black
Mod. 1499_Bianco/White
Mod. 1501_Crigio/Grey



Mod. 1210
Fucsia
Fuchsia



Mod. 1212
Giallo
Yellow



Mod. 1213
Verdone
Deep Green



Mod. 1214
Arancio
Orange



Mod. 1215
Bluette
Bright Blue



Mod. 1216
Pistacchio
Pistachio



Mod. 1218
Turchese
Turquoise



Mod. 1219
Bordeaux
Wine Red



Mod. 1497
Viola
Violet



Mod. 1500
Blu
Blue



Mod. 1496
Bordeaux Gessato
Wine Red Pin Stripe



Mod. 1495
Nero Gessato
Black Pin Stripe



Mod. 1492
Crêpes



Mod. 1493
Caffè/Coffee



Mod. 1498
Marrone
Brown



CARTER UNISEX



Mod. 1557



Mod. 1558



Mod. 1554

Bandana unisex.
Unisex bandana.

Tessuto: poliestere 65% -cotone 35%
Fabric: polyester 65%-cotton 35%

Taglia Unica/One Size Only

Fantasia/Patterned (gr.210 mq)

Mod. 1554_Food

Mod. 1557_Poker

Mod. 1558_Mani/ Hands



Mod. 1556
Paprika



Bianchi
White



Colorati
Colored



ATON UNISEX

Fazzoletto unisex/Unisex handkerchief

Tessuto: cotone 100%

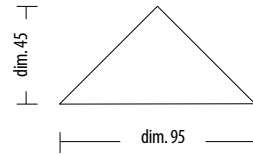
Fabric: Cotton 100%

Taglia Unica/One Size Only

Tinta unita/One color (gr. 190 mq)

Gessato/Pin Stripe (gr. 190 mq)

Fantasia/Patterned (gr. 200 mq)



Mod. 1253
Nero Quadri Bianchi
Black White Checks



Mod. 1254
Bianco/White



Mod. 1255
Rosso/Red



Mod. 1256
Bluette/Bright Blue



Mod. 1257
Giallo/Yellow



Mod. 1517
Nero/Black



Mod. 1259
Riga Bordeaux
Wine Red Stripe



Mod. 1264
Bordeaux Fantasia
Wine Red Patterned



Mod. 1265
Jeans



Mod. 1266
Giornale/Newspaper



Mod. 1267
Città/City



Mod. 1514
Diavoletto/Devil



Mod. 1515
New York



Mod. 1516
Nero Gessato/Black Pin Stripe



WHITE LINE UNISEX



Indo_Mod.1270

Adam_Mod.1271

Berretto unisex con elastico posteriore.
Unisex beret with back elastic.

Tessuto: poliestere 65%-cotone 35%
Fabric: polyester 65%-cotton 35%
(gr. 140 mq)

Indo_Mod.1270 con rete/*with net*
Adam_Mod.1271

Bustina unisex regolabile con velcro.
Unisex forage cap adjustable with velcro.

Tessuto: cotone 100%
Fabric: cotton 100%
(gr. 160 mq)

Alvin_Mod.1268
Enea_Mod.1269 con rete/*with net*

Cuffia donna con elastico posteriore.
Woman bonnet with back elastic.

Tessuto: poliestere 65%-cotone 35%
Fabric: polyester 65%-cotton 35%
(gr. 140 mq)

Ema_Mod. 210
Iside_Mod.211 con rete/*with net*

Alvin _Mod.1268

Enea _Mod.1269



Ema _Mod. 210

Iside _Mod.211



DONNA
WOMAN



Bianchi
White



Colorati
Colored



IMATRA UNISEX



Mod. 1232



Mod. 1243

Tamburello unisex con elastico posteriore.
Unisex tambour with back elastic.

Tessuto: cotone 100%

Fabric: Cotton 100%

Taglia Unica/One Size Only

Tinta unita/One color (gr. 190 mq)

Gessato/Pin Stripe (gr. 190 mq)

Fantasia/Patterned (gr. 200 mq)

Mod. 1232

Giornale

Newspaper

Mod. 1243

Nero Quadri Bianchi

Black White Checks



Mod. 1230

Bianco/White



Mod. 1509

Nero/Black



Mod. 1508

Nero Gessato
Black Pin Stripe



Mod. 1229

Bordeaux Fantasia
Wine Red Patterned



Mod. 1231

Città/City



Mod. 1235

Jeans



Mod. 1241

Riga Bordeaux
Wine Red Stripe



Mod. 1506

Diavoletto/Devil



Mod. 1507

New York



MILLER UNISEX



Mod. 1183



Mod. 1179

Cappello unisex baseball regolabile.
Unisex *baseball cap adjustable.*

Tessuto: cotone 100%
Fabric: cotton 100%
Taglia Unica/One Size Only

Mod. 1179_Rosso/Red
Mod. 1183_Nero/Black



Mod. 1180
Verde/Green



Mod. 1181
Bluette/Bright Blue



Mod. 1182
Bianco/White

50



MIAMI UNISEX

Cappello unisex con elastico posteriore.
Unisex hat with back elastic.

Tessuto: poliestere 100%

Fabric: polyester 100%

Taglia Unica/One Size Only

Tinta unita/One color (gr. 195 mq)

Fantasia/Patterned (gr. 160 mq)

Gessato/Pin Stripe (gr. 180 mq)



Mod. 1188
Pistachio/Pistachio



Mod. 1189
Arancio/Orange



Mod. 1190
Fucsia/Fuchsia



Mod. 1191
Turchese/Turquoise



Mod. 1192
Verdone/Deep Green



Mod. 1193
Bordeaux/Wine Red



Mod. 1194
Nero/Black



Mod. 1195
Giallo/Yellow



Mod. 1196
Bluette/Bright Blue



Mod. 1197
Rosso/Red



Mod. 1480
Viola/Violet



Mod. 1481
Marrone/Brown



Mod. 1482
Bianco/White



Mod. 1483
Blu/Blue



Mod. 1484
Grigio/Grey



Mod. 1475
Crêpes



Mod. 1476
Caffè/Coffee



Mod. 1478
Nero Gessato
Black Pin Stripe



Mod. 1479
Bordeaux Gessato
Wine red Pin Stripe

50



CRUZ UNISEX

Bustina unisex regolabile con velcro.
Unisex forage cap adjustable with velcro.

Tessuto: poliestere 100%

Fabric: polyester 100%

Taglia Unica/One Size Only

Tinta unita/One color (gr. 195 mq)

Fantasia/Patterned (gr. 160 mq)

Gessato/Pin Stripe (gr. 180 mq)



Mod. 301
Turchese/Turquoise



Mod. 302
Giallo/Yellow



Mod. 303
Arancio/Orange



Mod. 1198
Pistacchio/Pistachio



Mod. 1204
Rosso/Red



Mod. 1205
Bluette/Bright Blue



Mod. 1206
Fucsia/Fuchsia



Mod. 1207
Nero/Black



Mod. 1208
Bordeaux/Wine Red



Mod. 1209
Verdone/Deep Green



Mod. 1488
Viola/Violet



Mod. 1489
Marrone/Brown



Mod. 1490
Blu/Blue



Mod. 1491
Grigio/Grey



Mod. 1485
Crêpes



Mod. 1486
Caffè/Coffee



Mod. 1202
Nero Gessato
Black Pin Stripe



Mod. 1203
Bordeaux Gessato
Wine Red Pin Stripe

CUCINA ACCESSORI

KITCHEN ACCESSORIES



IGOR

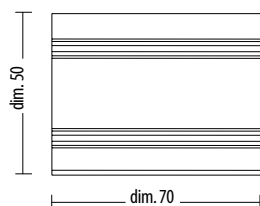
Tessuto: cotone 100%

Fabric: cotton 100%

Torcione/Dish cloth

Mod. 1318 _Bianco/White

(confezione da 6 pz/6 pieces package)



Bottoni estraibili; confezione da 12 bottoni.

Extractable buttons; 12 buttons package



Mod.1303
Argento/Silver



Mod.1304
Bianco/White



Mod.1305
Giallo/Yellow



Mod.1306
Rosso/Red



Mod.1307
Bluette/Bright Blue



Mod.1308
Nero/Black



Mod.1519
Grigio Antracite
Grey Anthracite



GOLIA FALCO UNISEX

Lavaggio max 25 cicli
Washing cycles max 25

EN 407
424 XXX

GOLIA

DPI II° Categoria 89/686/CEE

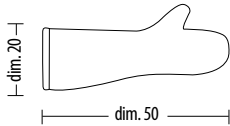
Tessuto: cotone 100% ignifugo

Fabric: 100% cotton flame retardant

Taglia Unica/One Size Only

Guanto unisex forno professionale,
imbottito con Thermore®.
*Unisex professional oven glove,
Thermore® padded.*

Mod. 215 _Verde/Green



Golia_Mod. 215



FALCO

DPI II° Categoria 89/686/CEE

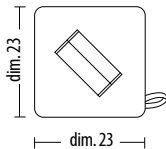
Tessuto: cotone 100% ignifugo

Fabric: 100% cotton flame retardant

Taglia Unica/One Size Only

Presona unisex cucina professionale,
imbottita con Thermore®.
*Unisex large professional kitchen
pot holder, Thermore® padded.*

Mod. 216 _Verde/Green



Falco_Mod. 216



SCARPE SHOES UNISEX

Scarpa unisex.
Unisex shoe.

Mod. 308_Bianco/White
Mod. 1520_Nero/Black
Omologato/Approved :
EN ISO 20345:2011 S1 SRC

Zoccolo unisex.
Unisex clogs.

Mod. 309_Bianco/White
Mod. 1521_Nero/Black
Omologato/Approved :
EN ISO 20345:2011 SB E A FO SRC



Scarpa antistatica
Antistatic footwear



Assorbimento dell'energia al tallone
Energy absorption of heel region



Suola resistente agli olii ed ai carburanti
Sole unit resistant to oils and fuels



Tomaia in materiale traspirante
Breathable upper material



Suola antiscivolo
Anti-slip sole



Lavabile in lavatrice a 40°C
Machine washable at 40°C



Puntale resistente a 200J
Toecap resistant to 200J

Taglie: 35/36/37/38/39/40/41/42/43/44/45/46/47
Size: 2/3/4/5/6/7/8/9/10/11/12/13/14



Mod. 308



Mod. 1520



Mod. 309



Mod. 1521

ZOCCOLO CLOGS UNISEX

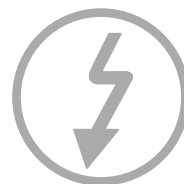
Mod. 218 *Bianco/White*

Omologato/Approved :
EN ISO 20347:2012 OB A E SRC

Ospedaliero/*Hospital*
Antiscivolo/*No-slip*
Anatomico/*Anatomical*
Antistatico/*Antistatic*

Sterilizzabile a 135°
Sterilizable at 135 degrees

Taglie: 35-36/ 37-38/ 39-40/ 41-42/ 43-44/ 45-46
Size: 2-3/ 4-5/ 6-7/ 8-9/ 10-11/ 12-13



Mod. 218

PACKAGING PRODOTTO/PRODUCT

SOLUZIONI CREATIVE PER IL PACKAGING E DISPLAY DEL PRODOTTO.
CREATIVE SOLUTIONS FOR PRODUCT PACKAGING.



TABELLA TAGLIE

SIZE CHART

DONNA/WOMEN	XS	S	M	L	XL	XXL
IT	36-38	40-42	44-46	48-50	52-54	56-58
GB	28-30	32-34	36-38	40-42	44-46	48-50
FR	34-36	38-40	42-44	46-48	50-52	54-56
DE	32-34	36-38	40-42	44-46	48-50	52-54
ES	26-28	30-32	34-36	38-40	42-44	46-48

UOMO/MEN	S	M	L	XL	XXL
IT	46-48	50-52	54-56	58-60	62-64
GB	36-38	40-42	44-46	48-50	52-54
FR	42-44	46-48	50-52	54-56	58-60
DE	46-48	50-52	54-56	58-60	62-64
ES	36-38	40-42	44-46	48-50	52-54

COLLETO UOMO MEN COLLAR	XS	S	M	L	XL	XXL
IT	36-37	38-39	40-41	42-43	44-45	46-47
INT	13 ½-14	14 ½-15	15 ½-16	16 ½-17	17 ½-18	18 ½-19

UNISEX	XS	S	M	L	XL	XXL	XXXL
IT	42-44	46-48	50-52	54-56	58-60	62-64	66-68
GB	32-34	36-38	40-42	44-46	48-50	52-54	56-58
FR	38-40	42-44	46-48	50-52	54-56	58-60	62-64
DE	42-44	46-48	50-52	54-56	58-60	62-64	66-68
ES	32-34	36-38	40-42	44-46	48-50	52-54	56-58

SCARPE/SHOES													
EU	35	36	37	38	39	40	41	42	43	44	45	46	47
GB	2	3	4	5	6	7	8	9	10	11	12	13	14

Le taglie in tabella sono da considerarsi indicative e possono variare a seconda del modello e della vestibilità dello stesso legati alla modellistica e all'attualità.

The sizes in the table are to be considered indicative and may differ depending on the model and fit linked to design and current trends.

NORME DI LAVAGGIO

WASHING INSTRUCTIONS

Per ottenere una migliore durata nel tempo dei capi acquistati, si prega di seguire le norme di lavaggio indicate sull'etichetta. Toma srl non risponderà di usure o scolorimenti causati dal non rispetto delle norme di lavaggio.

To ensure a longer-lasting use of the purchased garments, we recommend you to follow care instructions on the label. Toma S.r.l. is not responsible for wear or fading caused by the non-observance of the care instructions.

LAVAGGIO/WASHING



Non lavare.
Do not wash.



STIRATURA CON FERRO IRONING



Bassa temperatura massimo 110° C.
Low temperature maximum 110° C.



Media temperatura massimo 150° C.
Medium temperature maximum 150° C.



Non stirare.
Do not iron.

ASCIUGATURA/DRYING



Bassa temperatura.
Low temperature.



Non in asciugatrice.
Do not dry in dryer.

CANDEGGIO/BLEACHING



Candeggare.
Bleach.



Non candeggiare.
Do not bleach.

PULITURA A SECCO DRY CLEANING



Lavaggio a secco con tutti i solventi,
escluso la trielina.
Dry clean with all solvents
except trichloroethylene.



Non pulire a secco.
Do not dry clean.

Il presente catalogo è tutelato dalla legge sui diritti d'autore (Legge 22/04/1941 n° 1485) e ne è quindi proibita ogni forma di riproduzione sia totale che parziale; Tutti i colori dei tessuti rappresentati sono puramente indicativi, si declina ogni responsabilità per eventuali errori. L'azienda si riserva il diritto di apportare modifiche ai propri tessuti in qualsiasi momento e senza alcun obbligo di preavviso.

This catalogue is protected by copyright law (Italian law 1485 of 22/04/1941) and reproduction of all or part of it is strictly forbidden. All the colors of the fabrics represented in this catalogue are purely indicative, Toma srl assumes no responsibility for errors. The company reserves the right to make changes on its fabrics in any moment and without prior notice.

TOMA Srl
Via Marconi, 13 - 62010 Appignano (Mc) - Italy
T +39 0733 57321 (r.a.) F +39 0733 579622
E-mail: info@tomasrl.com
www.tomasrl.com

[f](#) [t](#) [i](#) [p](#) [in](#) | [tomayouniform](http://tomayouniform.com)